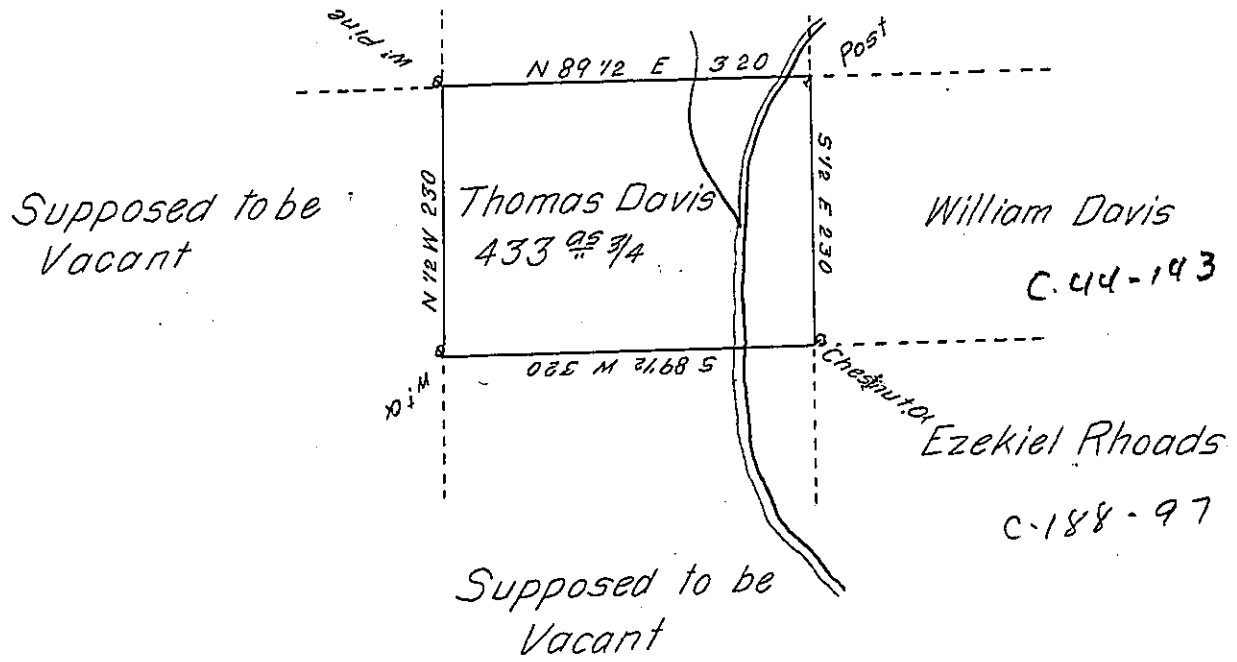


C. 205-131

Peter Shoemaker



A draught of a Tract of Land called _____ Situate in the County of Luzerne
 Adjoining William Davis and Others. Surveyed the 29th day of May 1793 for
 Thomas Davis in pursuance of a Warrant bearing date the 14th day of March
 1793. Containing four hundred and thirty three Acres and three Quarters, and
 the Allowance of Six P. Cent for Roads &c^a

To _____ Anty Crothers D.S.
 Daniel Brodhead Esq. }
 Surveyor General }

IN TESTIMONY that the above is a copy of the original remaining on file in
 the Department of Internal Affairs of Pennsylvania, made
 conformably to an Act of Assembly approved the 16th day of
 February, 1833, I have hereunto set my Hand and caused
 the Seal of said Department to be affixed at Harrisburg,
 this eighteenth day of July 1904

Francis D. Brown
 Secretary of Internal Affairs.